

Document No.: CTRX-07-004	Date: 2017-12-20	Document class: TECHNICAL NOTE
Handled by: Nils Willart	Rev.: 1.1	Document class: Company confidential
Product: AIS CTRX	Software version: 1.1.010 and higher	

Subject:
Resetting a programmed MMSI number

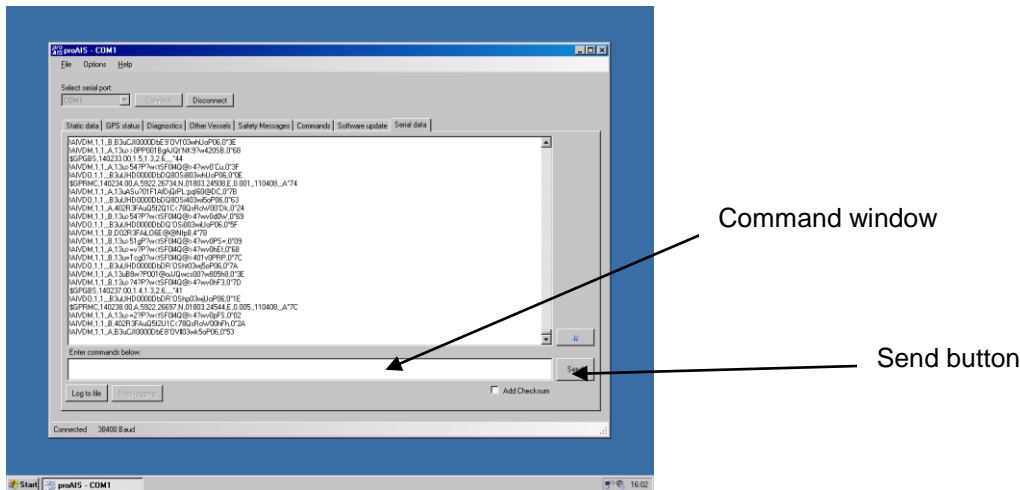
Once the MMSI has been programmed it can only be reset by using the NMEA commands below.

To reset the MMSI use the set-up software ProAIS. Connect the transponder serial port to the PC com port and start ProAIS. When the application has started, select com port and connect by clicking on the '**Connect**' button.

When connected the current static data will show on the screen.

To reset the static data proceed as follows:

Click on the '**Serial data**' tab and type in (or cut and paste) the commands below into the command window at the bottom of the page, then click on the '**Send**' button:



Reset command:

\$PSRT,012,,(--QuaRk--)*4B

\$PSRT,RDP*6F

Note: *In order to prevent the misuse of AIS transponders using illegally programmed MMSI's it is important that this information is kept confidential.*